



## THE CONNER GROUP

### Aerial Splicing Van (ASV)

#### 35' NON-INSULATED SPLICING VAN



- 35' Working Height
- 350 LBS Basket Capacity
- Non-Insulated

#### **Ford Transit or Mercedes Sprinter**

- Rear Splicing doors
- Heat / A/C
- Built in Shelving
- Diesel or Gas Options
- Choose your Generator KW

**\*\*\*Vans are Ready 4 Sale or Rental\*\*\***



# VERSALIFT VANTEL-29-NE

## 35' NON-INSULATED, SPLICING PACKAGE



# VANTEL-29-NE

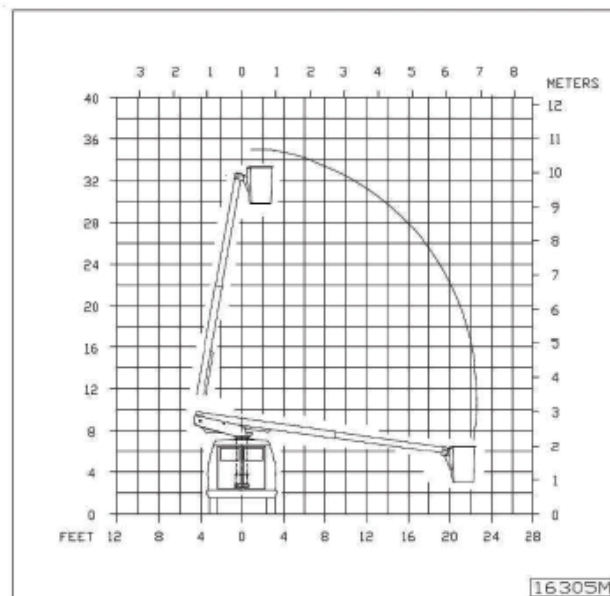
## Telescopic Aerial Device

### GENERAL SPECIFICATIONS

GENERAL SPECIFICATIONS	VANTEL-29-NE
Horizontal Reach	22 ft. 7 in. (6.88m)
Standard Platform Capacity	300 lbs. (136kg)
Outer Boom Travel	-8° to +80°
Inner Boom Extension	116 in. (2.95m)
Height to Bottom of Platform	29 ft. 10 in. (9.09m)
Working Height	34 ft. 10 in. (10.6m)
Stowed Travel Height	9'-9" (2.97m)
Weight of Lift W/ Mounting Hardware	1530 lbs. (694 kg)
Operating Pressure	2250 PSI (158 KG/CM <sup>2</sup> )
Flow Rate	2 GPM (8 lpm)
Filtration	10 micron return/ 100 mesh suction
System Type	Open Center

### OPTIONS:

- EMERGENCY LOWERING
- BACK UP PUMP
- PNEUMATIC CIRCUIT(S) TO THE PLATFORM
- VARIOUS PLATFORMS, DOORS AND COVERS
- BUMPER EXTENSIONS
- 120 VOLT RECEPTACLE AT PLATFORM
- MANUAL PLATFORM POSITIONER
- BRIDGEMOUNT
- ELECTRIC DRIVE



**VANTEL-29-NE**  
Platform Travel

### NOTE:

1. Specifications might vary without prior notification
2. Required GVWR can vary significantly with chassis, lift mounting location, service body, accessories, and desired payload